



ABOUT US

Dezaw focuses on the development of CNC system, servo motor and driver, stepper motor and driver, closed loop stepper motor and driver, spindle, inverter design, products and sales. Above products are widely used in various of industrial automation fields. such as: CNC lathe machine, CNC milling machine, packing machine, drilling machine, grinding machine, gear hobbing machine, embroidery machine, bag making machine, dispenser and other machine tool numerical control transformation and supporting.

Dezaw upholds "customer first, credit-oriented", to create the most practical and ideal products, to serve various fields of society with the business approach of "quality products, excellent service".





DV201



DV203



DV001



DV202



DV30L



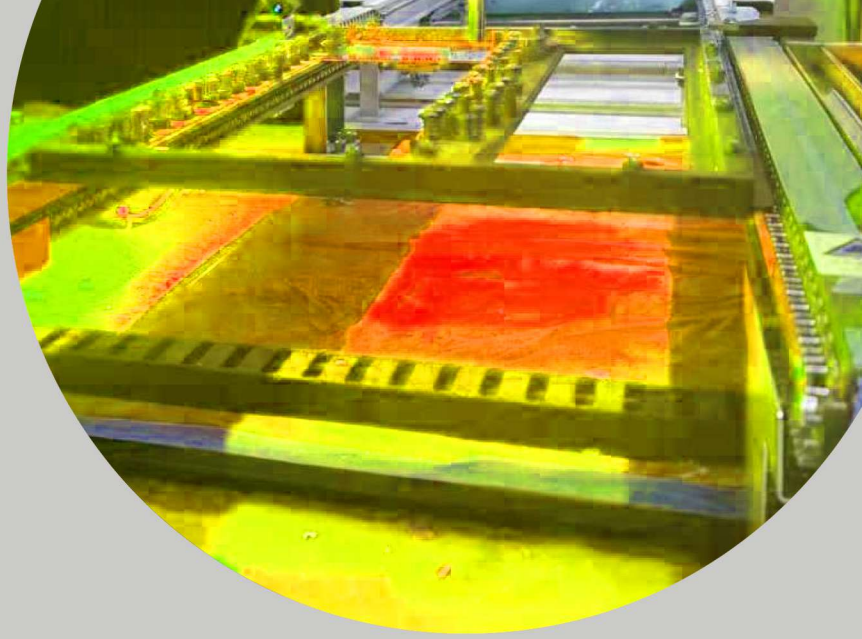
DVAES

LABORATORIES

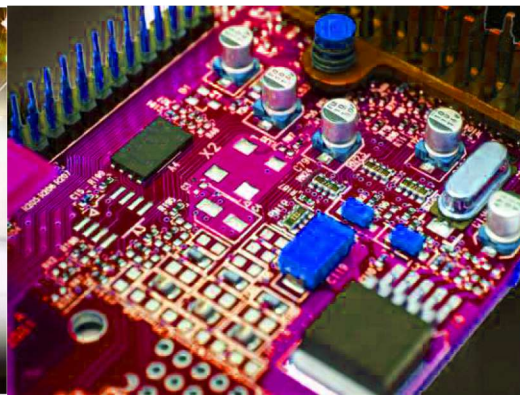


- **STRONG RD**
- **Professional RD Team**
- **Complete Lab Facilities**
- **Pursuit of Perfection**

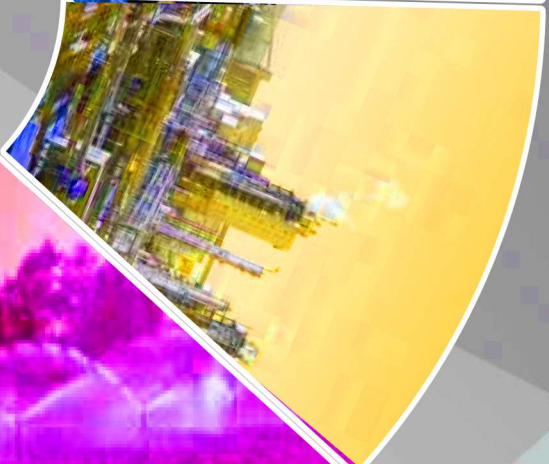
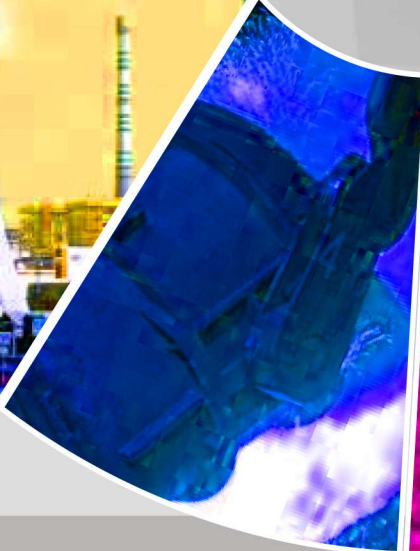




**Manufacturing
HARSH QC
FULL LOADING TEST
ENOUGH AGING IN EXTREM CONDITION**



APPLICATION





AC DRIVE Product

DV201



PRODUCT FEATURE

- Wide input voltage range, 10% more
- Less Capacity & Better Heat Radiation
- Excellent speed control accuracy. V/F control: 0.5%, SVC control: 0.2%
- optional for LED keypad & adapted for extended keypad.
- with braking unit & Modbus, support Virtual terminals and PLC. Complete protective function.
- support STO.

Application: Textile. Packing, Food, plastic etc

AC DRIVE Product

Product feature

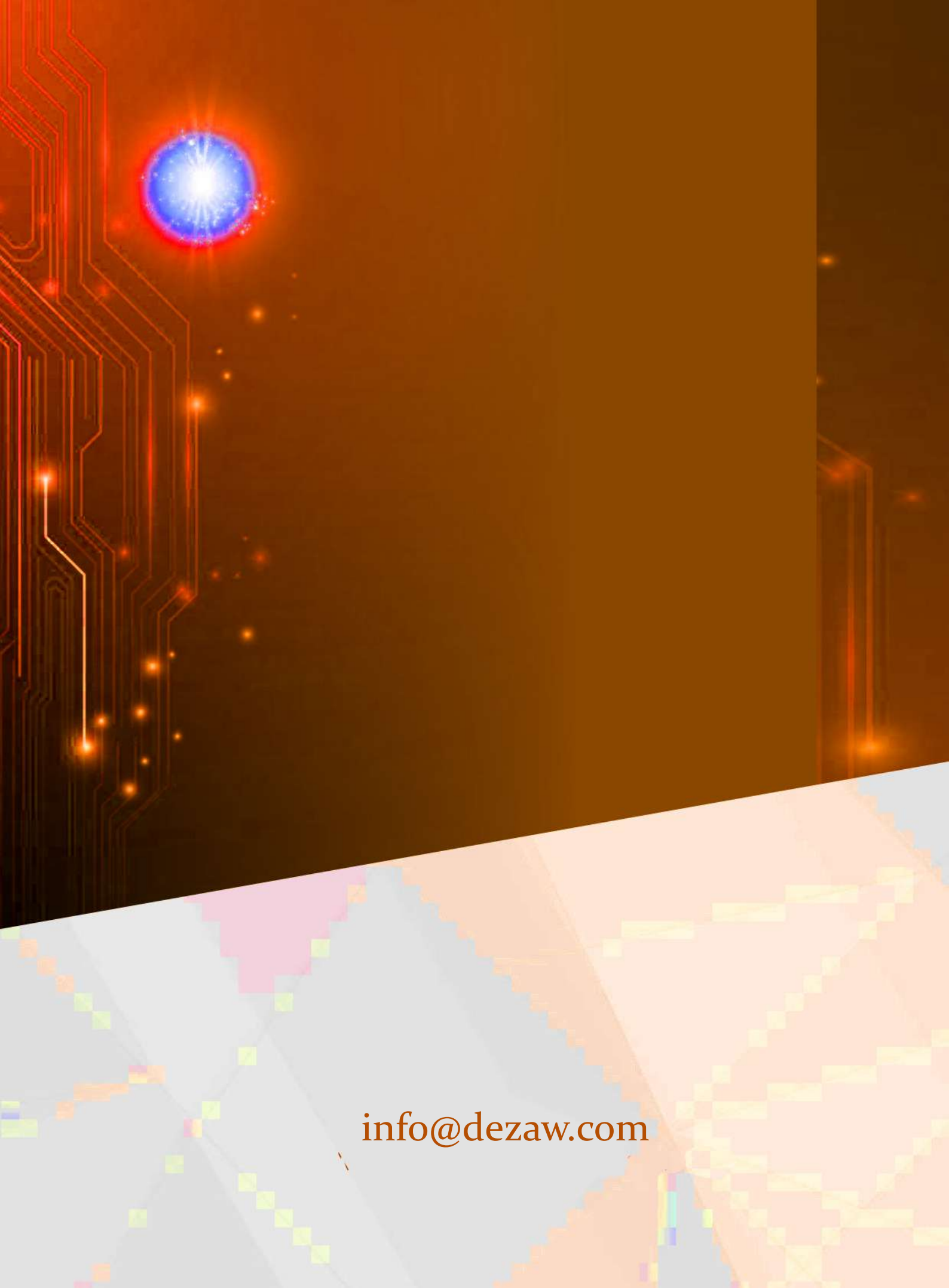
- Wide input voltage range, 10% more
- Precise control with accurate speed response v/f control: 0.5% svc control:0.2%
- Good anti-disturb performance.
- Optional for led keypad & adapted for extended keypad.
- With braking unit & modbus, support virtual terminals and plc. Complete Protective function.
- Support STO.
- Support pmsm
- High end application

Application: Textile. Packing, Food, plastic, environmental protection etc.



DV203





info@dezaw.com